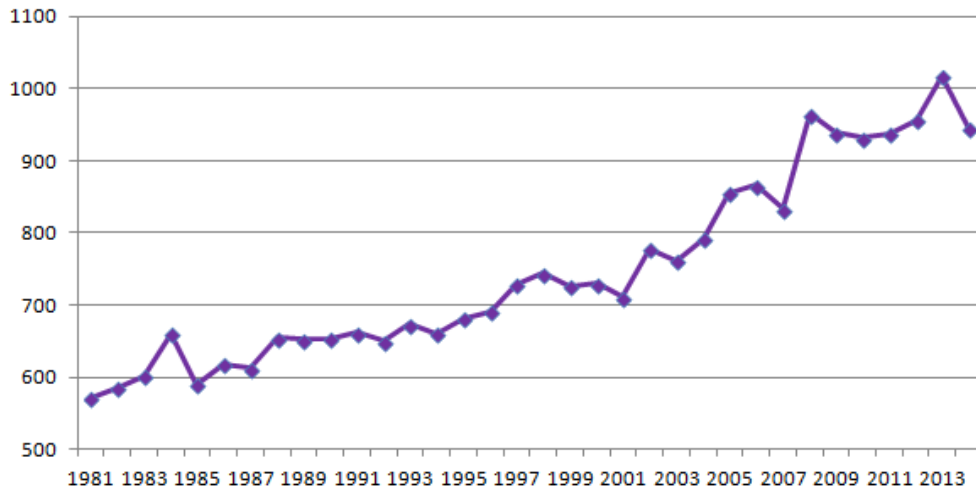


### SUICIDE DEATHS IN TENNESSEE, 1981-2014



YEAR	DEATHS	RATE
1981	571	12.3
1982	586	12.6
1983	602	12.9
1984	661	14.1
1985	590	12.5
1986	618	13.0
1987	612	12.8
1988	655	13.6
1989	652	13.4
1990	653	13.4
1991	662	13.3
1992	650	12.9
1993	673	13.1
1994	660	12.6
1995	681	12.8
1996	691	12.8
1997	729	13.3
1998	744	13.4
1999	726	12.9
2000	730	12.8
2001	711	12.4
2002	778	13.4
2003	762	13.0
2004	792	13.4
2005	856	14.3
2006	866	14.4
2007	833	13.7
2008	965	15.7
2009	939	15.1
2010	932	14.7
2011	938	14.6
2012	956	14.8
2013	1,017	15.7
2014	945	14.4

These figures were obtained from the Web-based Injury Statistics Query and Reporting System (WISQARS), an interactive database system maintained by the Centers for Disease Control and Prevention (CDC). WISQARS provides customized reports of injury-related data. These figures may differ from those in other TSPN rate charts, which were created using data from the Tennessee Department of Health.

#### What do the numbers mean?

The above chart gives the raw number of reported suicides for each year, while the other chart breaks the numbers down using rate per 100,000--a common statistical measure--to demonstrate relative frequency.

#### Why have the numbers gone up?

Often, the stigma surrounding suicide and mental illness resulted in family members claiming a suicide death was an accident or natural causes, often with the approval of local doctors or medical examiners. But as this stigma gradually ebbs and record-keeping practices improve, more suicide deaths are being correctly classified. While this phenomenon produces an apparent increase in numbers and rates, it also guarantees that the numbers are more accurate.

### SUICIDE RATES IN TENNESSEE, 1981-2014

